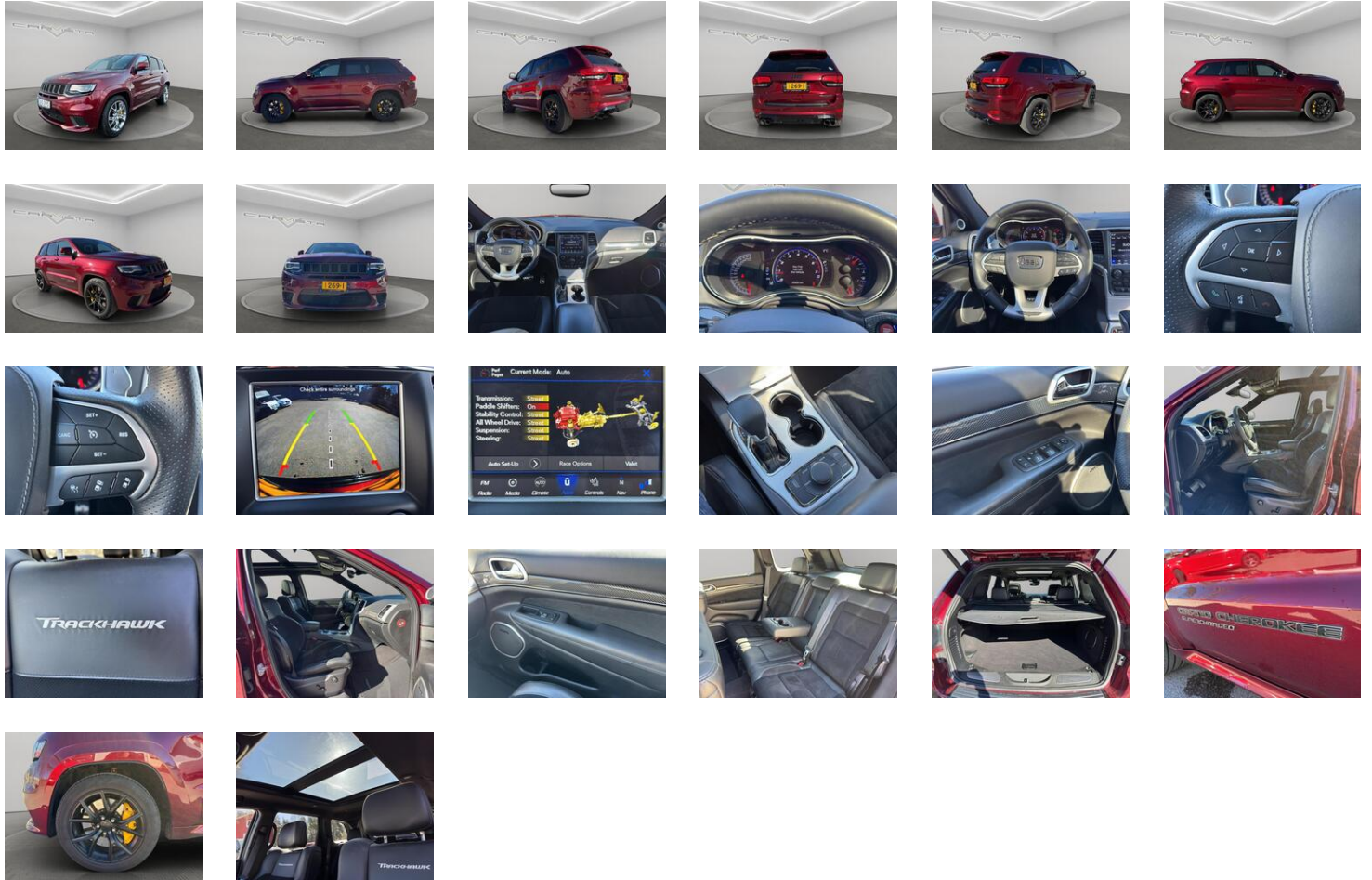


## Jeep Grand Cherokee Trackhawk 6.2L Super Charged AWD, EAS-095



169 900 € (sis. alv), 6,2 l, 2018 (ensirek. 4-2018), 30 000 km, Bensiini, Neliveto, Automaatti, Punainen, Metalliväri, Katsastettu 8/2024

**Turvallisuus** : Adaptiiviset ajovalot, Ajonvakautusjärjestelmä, Isofix-valmius, Kaarrevalot, Katveavustin, Käynnistykseenesto, Luistonestojärjestelmä, Lukkiutumattomat jarrut (ABS), Mäkilähtöavustin, Sumuvalot, Turvatyyny, Varashälytyn

**Sisätilat ja mukavuudet** : Ajotietokone, Avaimeton käynnistys, Ilmastointi: Automaattinen, Kaadettavat takaistuimet, Keskuslukitus: Avaimeton, Keskuslukitus: Kaukosäätöinen, Lohkolämmitin / moottorilämmitin, Lämmitettävä ohjauspyörä, Nahkaverhoilu, Navigointijärjestelmä, Ohjaustehostin, Penkinlämmittimet, Peruutuskamera: Kamera takana, Pysäköintitutka, Rengaspainevalvonta -järjestelmä, Sisätilanpistoke, Sähkökäyttöiset ikkunat, Sähköpeilit, Sähkösäätöiset istuimet: Muistilla, Sähkötoiminen takaluukku, Tavaratilan turvaverkko, Urheiluistuimet, Vakionopeudensäädin: Mukautuva

**Elektroniikka** : Audio-liitäntä, Bluetooth, Matkapuhelinvarustus, USB, Älypuhelimien integrointi, Äänentoistojärjestelmä

**Muut** : Alustasarja, Huoltokirja: Paperinen, Kahdet renkaat, Kattoluukku: Panoraama, Kevytmetallivanteet, Lasikatto, Monitoimiohjauspyörä, Sadetunnistin, Urheilullinen alusta

**Tekniset tiedot** : Teho 522 kW / 710 Hv, Vääntö 881 Nm, CO<sub>2</sub> -päästöt 385 g/km, Huippunopeus 290

**km/h**, Kiihtyvyyys (0-100) **3,70 s**, Henkilömäärä **5**, Ovien lkm **5**, Polttoaineen kulutus: Yhdistetty **16,8 l/100km**, Ohjauslaite **Vasemmalla**, Omamassa **2 531 kg**

**Lisätiedot :**

Ruotsissa uutena myyty, 1-omistaja, Hinta sis.alv.25.5%, Hinta sis.autoveroa 61t€, 2 x pyörät alkuperäisillä vanteilla,

**STANDARD EQUIPMENT**

INTERIOR METAL PACKAGE  
MONOTONE PAINT  
SMOKER'S GROUP  
220 AMP ALTERNATOR  
700 AMP MAINTENANCE FREE BATTERY  
RAIN BRAKE SUPPORT  
READY ALERT BRAKING  
ELECTRONIC STABILITY CONTROL  
HILL START ASSIST  
HILL DESCENT CONTROL  
FOUR WHEEL TRACTION CONTROL  
TRAILER SWAY DAMPING  
BREMBO 6-POT FXD FRT CALIPER BRAKES  
VENTILATED FRONT SEATS  
ACTIVE HEAD RESTRAINTS  
UNDER SEAT LIGHTING  
LUXURY BERBER FLOOR MATS W/LOGO  
REAR 60/40 FOLDING SEAT  
CHILD SEAT UPPER TETHER ANCHORAGES  
ADV LEATHER MULTISTAGE FRT AIR BAGS  
SUPPLEMENTAL SIDE AIR BAGS  
CHILD SEAT ANCHOR SYSTEM-LATCH READY  
DRVR INFLATABLE KNEE-BOLSTER AIR BAG  
CENTER REAR 3-POINT SEAT BELT  
SUPPLEMENTAL FRT SEAT SIDE AIR BAGS  
FLOOR CARPET  
CARGO TIE DOWN LOOPS  
CARGO COMPARTMENT COVER  
PASSENGER ASSIST HANDLES  
NAPPA LEATHER, NON-LAGUNA DOOR TRIM  
FULL LENGTH FLOOR CONSOLE  
OVERHEAD CONSOLE  
LEATHER WRAPPED SHIFT KNOB  
ILLUMINATED CUPHOLDERS  
ELEC. STEERING COLUMN SHAFT LOCK  
QUADRA-TRAC ACTIVE ON DEMAND 4WD  
195MM FRONT AXLE  
3.70 REAR AXLE RATIO  
230MM REAR AXLE  
ELEC LTD SLIP DIFFERENTIAL RR AXLE  
CONVENTIONAL DIFFERENTIAL FRT AXLE  
REAR SUNSCREEN ACOUSTIC LAM. GLASS

ACOUSTIC WINDSHIELD  
ACOUSTIC LAMINATED FRONT DOOR GLASS  
TINTED WINDSHIELD GLASS  
FRONT DOOR TINTED GLASS  
DEEP TINT SUNSCREEN GLASS  
REAR WINDOW DEFROSTER  
SUN VISORS W/ILLUM VANITY MIRRORS  
REAR VIEW AUTO DIM MIRROR  
2-DOOR PASSIVE ENTRY, FRT DOOR LOCKS  
REMOTE KEYLESS ENTRY  
SENTRY KEY THEFT DETERRENT SYSTEM  
KEYLESS ENTER-N-GO  
POWER FOLDING MULTI-FUNCTION MIRRORS  
AIR COND ATC W/DUAL ZONE CONTROL  
HOOD INSULATION  
PREMIUM INSULATION GROUP  
PREMIUM INSTRUMENT CLUSTER W/TACH  
INSTR. CLUSTER W/PERF DISPLAY SCREEN  
INSTR PANEL LIGHT BLACK CHROME BEZEL  
INSTR. PANEL ALUDIAM LINEAR BEZEL  
SILVER THREAD CBN SPEARS(I/P, DOORS)  
320 KPH PRIMARY SPEEDOMETER  
TEMPERATURE & COMPASS GAUGE  
REAR WINDOW WIPER/WASHER  
RAIN SENSITIVE WINDSHIELD WIPERS  
DUAL NOTE ELECTRIC HORNS  
AUXILIARY 12-VOLT REAR POWER OUTLET  
UNRESTRICTED MAX SPEED CALIBRATION  
12V AUXILIARY POWER OUTLET  
POWER ACCESSORY DELAY  
AIR FILTERING  
POWER LOCKS  
HEATED FRONT SEATS  
HEATED SECOND ROW SEATS  
PWR FRONT WINDOWS, 1-TOUCH,UP & DOWN  
POWER LIFTGATE  
PWR DRIVER/PASS 4-WAY LUMBAR ADJUST  
PWR 8-WAY DRVR MEM 8-WAY PASS SEATS  
ILLUMINATED ENTRY  
ECO MODE BUTTON  
FRONT PASSENGER SEAT BELT ALERT  
LED TAILLAMPS  
VEHICLE INFORMATION CENTER  
PERFORMANCE SHIFT INDICATOR  
GLOVE BOX LAMP  
DRIVER & PASSENGER LOWER LED LAMPS  
FRONT & REAR INTERIOR LED LAMPS  
DOOR COURTESY LAMPS  
DARK LENS TAILLAMPS  
RADIO/DRIVER SEAT/MIRRORS MEMORY

AUTOMATIC HEADLAMPS  
ADAPTIVE BI-XENON HID HEADLAMPS  
AUTO HIGH BEAM HEADLAMP CONTROL  
REAR FOG LAMPS  
DELUXE SECURITY ALARM  
ENHANCED ACCIDENT RESPONSE SYSTEM  
FRONT LICENSE PLATE BRACKET  
DARK HEADLAMP BEZEL FINISH  
BLACK GRILLE  
BODY COLOR FASCIA SW/GLOSS BLK INSERT  
DARK DAY LIGHT OPENING MOLDINGS  
BODY COLOR DOOR HANDLES  
BRIGHT LICENSE PLATE BROW  
BODY COLOR SILL EXTENSION  
WHEEL FLARE EXTENSION KIT  
"SUPERCHARGED" SILL PLATE  
JEEP BADGE  
GRAND CHEROKEE SUPERCHARGED BADGE  
BLACK ROOF MOLDING  
INTEGRATED LIFTGATE REAR SPOILER  
TRACKHAWK BADGE  
EXPORT EMISSIONS  
BRIGHT QUAD EXHAUST TIPS  
24.6 GALLON FUEL TANK  
ENGINE OIL COOLER  
HEATED STEERING WHEEL  
HEAVY DUTY ENGINE COOLING  
HIGH SPEED ENGINE CONTROLLER  
VELVET RED PEARL COAT  
BODY COLOR SHARK FIN ANTENNA  
DUAL REMOTE USB PORT - CHARGE ONLY  
MEDIA HUB (2 USB, AUX)  
ELECTRIC POWER STEERING  
LEATHER WRAPPED STEERING WHEEL  
COMPETITION SUSPENSION  
ACTIVE DAMPING SUSPENSION  
POWER TILT/TELESCOPE STEERING COLUMN  
RUN FLAT TIRES  
COMPACT SPARE TIRE  
295/45ZR20 BSW ALL SEASON TIRES  
PARKVIEW REAR BACK-UP CAMERA  
SELEC-TRAC SYSTEM  
BRIGHT PEDALS  
NON ADJUSTABLE PEDALS  
TIP START  
STEERING WHEEL MOUNTED SHIFT CONTROL  
LEATHER WRAPPED I/P & CENTER ARMREST  
R1234YF A/C REFRIGERANT  
TIRE PRESSURE MONITORING DISPLAY  
CONFIGURABLE DRIVE MODE

PARALLEL & PERP PARK ASSIST W/STOP  
POWER LOCKING FUEL FILLER DOOR  
CAPLESS FUEL FILL W/O DISCRIMINATOR  
PASSIVE PEDESTRIAN PROTECTION  
PROTECTIVE COATING AND REMOVER  
IRIDIUM SILVER INTERIOR ACCENTS  
SELECTABLE STEERING MODES  
REAR FASCIAS PARTS  
BUILD TO EXPORT MKT. SPECIFICATIONS  
GVW RATING - 6600#  
EMEA REGION ROW  
ZONE 06-EXPORT  
FOUR WHEEL DRIVE (4WD)/(4X4)  
LEFT HAND DRIVE (LHD)  
2018 VEHICLE SPECIFICATIONS

#### OPTIONAL EQUIPMENT

SUEDE/NAPPA PERFORMANCE SEATS  
BLACK  
EUROPEAN EQUIPMENT GROUP  
ADVANCED TECHNOLOGY GROUP  
HIGH PERFORMANCE AUDIO  
ADVANCED BRAKE ASSIST  
PREMIUM HEADLINER MODULE  
SUPP. SIDE CURTAIN FRT/RR AIR BAGS  
REMOVABLE ASH TRAY  
LOCK ON SYNC TIRE PRESS SENSOR  
#4 SEAT FOAM CUSHION  
ALL AUTOMATIC TRANSMISSIONS  
8-SPD AUTO 8HP95 TRANSMISSION (BUY)  
6.2L SUPERCHARGED HEMI V8 SRT ENGINE  
AUTO DIM EXTERIOR DRIVER MIRROR  
DUAL-PANE PANORAMIC SUNROOF  
ALUM PAINTED STEERING WHEEL BEZEL  
HEADLAMP WASHER  
CIGAR LIGHTER  
AUTOMATIC HEADLAMP LEVELING SYSTEM  
GPS NAVIGATION  
GPS ANTENNA INPUT  
ACTIVE NOISE CONTROL SYSTEM  
ALUMINUM LITHOGRAPH SHIFTER BEZEL  
SHIFT INDICATOR WARNING LAMP  
LANE DEPARTURE WARNING PLUS  
EXT. MIRRORS W/SUPPLEMENTAL SIGNALS  
EXTERIOR MIRRORS COURTESY LAMPS  
EXTERIOR MIRRORS W/MEMORY  
BODY COLOR EXTERIOR MIRRORS  
POWER-FOLDING MIRRORS  
AUTO DIM EXTERIOR PASSENGER MIRROR

LED DAYTIME RUNNING HEADLAMPS  
FULL SPEED FWD COLLISION WARN PLUS  
EURO STAGE 6B EMISSIONS  
EXTERIOR MIRRORS W/HEATING ELEMENT  
PASSIVE SPEED LIMITING DEVICE  
ADAPTIVE CRUISE CONTROL W/STOP  
VELVET RED PEARL COAT  
ALL RADIO EQUIPPED VEHICLES  
19 SPKRS HIGH PERF AUDIO  
825 WATT AMPLIFIER  
STEERING WHEEL MOUNTED AUDIO CTRLS  
8.4" TOUCHSCREEN DISPLAY  
APPLE CARPLAY  
GOOGLE ANDROID AUTO  
USB HOST FLIP  
SINGLE DISC REMOTE CD PLAYER  
DIGITAL AUDIO BROADCASTING  
UCONNECT LIVE - EUROPE  
PIRELLI BRAND TIRES  
UCONNECT 4 NAV WITH 8.4" DISPLAY  
EUROPEAN RADIO COUNTRIES  
ALL ALUMINUM WHEELS  
20X10.0 BLACK SATIN ALUM WHEELS  
20X6.5 ALUMINUM SPARE WHEEL  
BLIND SPOT AND CROSS PATH DETECTION  
TOW EYE BRACKETS  
JEEP CALL ASSISTANCE LABEL  
SWEDISH LANGUAGE  
INTEGRATED VOICE COMMAND W/BLUETOOTH  
3 ADDITIONAL GALLONS OF GAS  
SPRING - LEFT REAR  
SPRING - LEFT FRONT  
SPRING - RIGHT REAR  
SPRING - RIGHT FRONT  
CUSTOMER PREFERRED PACKAGE 2TV  
CUSTOMER PREFERRED PACKAGE 2XV  
INTL. PRICE PROTECTION B  
COSO WT. & D.M.  
MARKET HOMOLOGATION  
EXPORT OCEAN FREIGHT  
EXPORT INSURANCE  
1NTL 37 DAY SCHEDULE  
FIAT WARRANTY TRACKING  
SOLD VEHICLE  
SPECIAL SCHEDULING CONDITION III  
DELETE DOMESTIC WARRANTY MANUAL  
EXPORT OPTION REQUIREMENTS  
CERTIFICATE OF CONFORMANCE  
EUROPEAN E MARK LABEL  
MANUFACTURER BODY PLATE

SWEDEN COUNTRY CODE  
WESTERN EUROPE REGION GROUP

**Maakunta** : Lohja, Uusimaa

**Myyjä** : Carvista, Mustikkatie 2b, 08500 Lohja. Puh.: +358445512411

**\*\*Varmista tietojen oikeellisuus myyjältä\*\***

---

Suomen suosituin autojen markkinapaikka – <https://www.nettiauto.com/>